

NEWSLETTER 229 – September 2017

**Next meeting: 28 September 2017.** Rhu Church hall, from 7.15pm:

**Member's season.** As the first of the autumn meetings this will be an opportunity to catch up with other members and discuss how the season went. If you've any spare, please bring along a spare jar of honey for a tasting session.

### What's happening in the hive?

Things should be winding down now with long-lived winter bees coming to the fore. Hopefully treatment for *Varroa* is going well and mite drops are decreasing. Now it's time to focus on preparations for the winter, first and foremost feeding the colonies such that there is sufficient food to last.

### Members' colony survey

Several members have sent through details of their season – thank you. We'll try to collect a bit more information from others so that we've as good an overview as possible of the season we've had as an association.

### Bumble bee talk

You may have noticed a flyer come round about a talk on bumble bees by Tony Harris,

Title: 'FW Sladen and the humblebee'

Place: Portmoak Hall by Scotlandwell

Time: 7.30pm

£3 entry.

### Asian hornets found in the UK:

News > UK > Home News

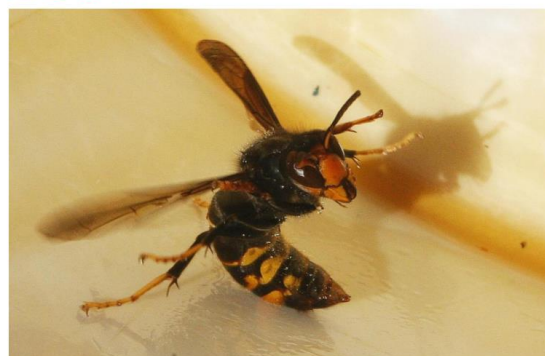
#### Asian killer hornet discovered in Devon posing threat to dwindling native bee populations

Insect incursion discovered near beehives

4 hours ago | 24 comments



Like Click to follow The Independent Online



An Asian hornet, Latin name "Vespa Velutina", is seen in a beehive in Fargues Saint Hilaire, south western France, December 1, 2009  
REUTERS/Regis Duvignau

## **Pollinator decline symposium**

**Tackling the Decline in Pollinating Insects:**  
Boosting Community Partnerships and Engagement Nationwide  
Park Plaza, Westminster Bridge, London  
**Thursday 12th October 2017**

**Philip Turvil**

Programme Director, Grow Wild  
Royal Botanic Gardens Kew

**Simon Goff**

Head of Green Spaces and Amenities  
Burnley Borough Council

**Dr Chris Hartfield**

Acting Chief Science and Regulatory Affairs Adviser  
NFU Plant Health

**Dr Michael Rose**

Head of Nature Strategy and Programme Team  
Unit DEFRA

**Link of the month:** <http://www.nationalbeeunit.com/>

With time to reflect on the end (or beginning, depending on your views) of the season it's worth remembering to sign up to BeeBase at the National Bee Unit.